



# JST-EBMH-(660-680)W

BC technology

Bifacial Double Glass Monocrystalline PV Module

**660-680W**

POWER RANGE

**25.2%**

MAXIMUM EFFICIENCY

**0.35%**

YEARLY DEGRADATION



15 YEARS PRODUCT WARRANTY



30 YEARS OUTPUT GUARANTEE



IEC 61215/IEC 61730

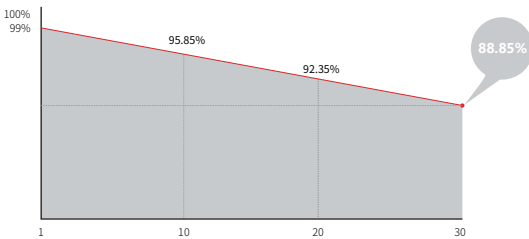
ISO 14001: Environmental Management System

ISO 9001: Quality Management System

ISO45001: Occupational Health and Safety Management System

\*As there are different certification requirements in different markets, please contact your local sales representative for the specific certificates applicable to the products in the region in which the products are to be used.

30-Year Power Warranty



## Key Features



### BC Cell Technology

BC technology enhances high product reliability.



### Better Weak Illumination Response

More power output in weak light condition, such as haze, cloudy, and early morning.



### Anti PID

Ensured PID resistance through the quality control of cell manufacturing process and raw materials.



### Adapt To Harsh Outdoor Environment

Resistant to harsh environments such as salt, ammonia, sand, high temperature and high humidity environment.



### Reaction to Fire Class 1

In conformity with standard UNI 9177:1987, reaction to fire class 1.



### Excellent Quality Management System

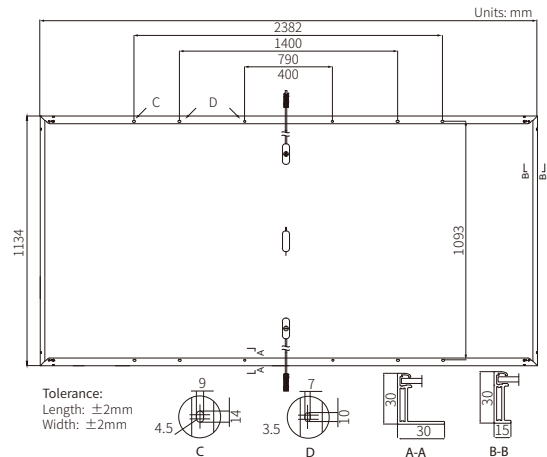
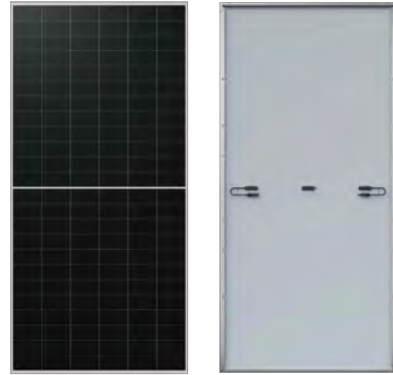
Warranted reliability and stringent quality assurances well beyond certified requirements.

**Operating Parameters**

Operational Temperature	-40°C ~ +85°C
Power Output Tolerance	0 ~ 3%
Maximum System Voltage	DC1500V (IEC)
Maximum Series Fuse Rating	25A
Nominal Operating Cell Temperature	45±2°C
Protection Class	Class II
Fire Rating	IEC Class C

**Mechanical Parameters**

Cell Orientation	144 (6×24)
Junction Box	IP68, three diodes
Output Cable	4mm <sup>2</sup> , +400, -200mm/±1400mm length can be customized
Glass	Single glass, 3.2mm anti-glare coated tempered glass
Frame	Anodized aluminum alloy frame
Weight	28.5kg
Dimension	2382×1134×30mm
Packaging	36pcs per pallet / 144pcs per 20' GP / 720pcs per 40' HC



**Electrical Characteristics** STC : AM1.5 1000W/m<sup>2</sup> 25°C NOCT : AM1.5 800W/m<sup>2</sup> 20°C 1m/s Test uncertainty for Pmax: ±3%

Module Type	660		665		670		675		680	
	STC	NOCT	STC	NOCT	STC	NOCT	STC	NOCT	STC	NOCT
Maximum Power (Pmax/W)	660	502	665	506	670	510	675	514	680	518
Open Circuit Voltage (Voc/V)	54.10	51.42	54.20	51.51	54.30	51.61	54.40	51.70	54.50	51.80
Short Circuit Current (Isc/A)	15.45	12.41	15.52	12.47	15.60	12.53	15.68	12.60	15.76	12.67
Voltage at Maximum Power (Vmp/V)	44.76	42.54	44.86	42.63	44.96	42.73	45.06	42.82	45.16	42.92
Current at Maximum Power (Imp/A)	14.75	11.82	14.83	11.88	14.91	11.94	14.98	12.01	15.06	12.07
Module Efficiency(%)	24.4		24.6		24.8		25.0		25.2	

**Mechanical Loading**

Front Side Maximum Static Loading	5400Pa
Rear Side Maximum Static Loading	2400Pa
Hailstone Test	25mm Hailstone at the speed of 23m/s

**Temperature Ratings (STC)**

Temperature Coefficient of Isc	+0.050%/°C
Temperature Coefficient of Voc	-0.200%/°C
Temperature Coefficient of Pmax	-0.260%/°C